

---

# Littleton Gem and Mineral Club

## October 2020 Highlites Newsletter.



**October Program:** Markus Raschke, Tabular Aquamarine and other minerals from Xuebaoding in China..

---

### President's Message

**October 2020**

Well, we continue work our way through the challenges of COVID 19 and our club activities. On a positive note our new online field sign-up was a success. We were able to have several local field trips that were fun and safe. It was fun to socialize and get fresh air in the mountains. Thanks to all members who wore masks and maintained social distancing. As I've mentioned in past newsletter, we've been working on ways to have an auction this year. Unfortunately, it's not feasible for us to have our annual LGMC Fall Silent & Verbal Auction this year due to COVID 19. We continue to explore options for holding a "similar but different" club fundraiser and will keep members posted on our plans.

We will continue having virtual General Meetings via Zoom on the third Friday of the month through the rest of the year. Last month's meeting, presented by Pat Tucci & Zelda Bailey, was a photo journal of their mineral safari in Namibia. This month's speaker, on Oct 16, will be Markus Raschke. The presentation will be on **Xuebaoding – Mining Above the Clouds**. Markus will discuss his field trip adventures, visiting the mines and the unusual tabular beryl in this locality. We'll send an email to all members with the Zoom meeting link prior to the meeting.

We are also looking for volunteers for 2021 LGMC officer positions. We have officer positions for President for 2021, as well as field trip leaders. The President elect would attend the board meetings in 2021 as prep for taking over in 2022. If you are interested in a volunteer position contact me at [rwankner@msn.com](mailto:rwankner@msn.com).

Reminder- be sure to take some time from digging or cleaning your mineral display to enjoy the cool Fall weather and changing leaf colors.

Ron Wankner

President LGMC

---

### Selected upcoming LGMC and Earth Science Events

**October 16th**      **LGMC October Meeting**, at 7:30pm via Zoom, link will be sent to your email.

**October 20th**      **Faceters and Cabbers** - The Faceters and Cabbers group continues to use Zoom for our regular monthly meetings. Our next meeting will be on Tuesday evening, October 20th, at 7:30pm. We will not be meeting in person for now. If you would like to join our group, and are not on our email list, contact me at [jkleber@att.net](mailto:jkleber@att.net) for the meeting information.

# Grab Bag News

## October Grab Bag News

If you would like to sew some bags while stuck at home, contact Lynette Warren at [flywithle123@comcast.net](mailto:flywithle123@comcast.net) or 303-956-4634 if you need any information on that. We would welcome any that you can make during our confinement.

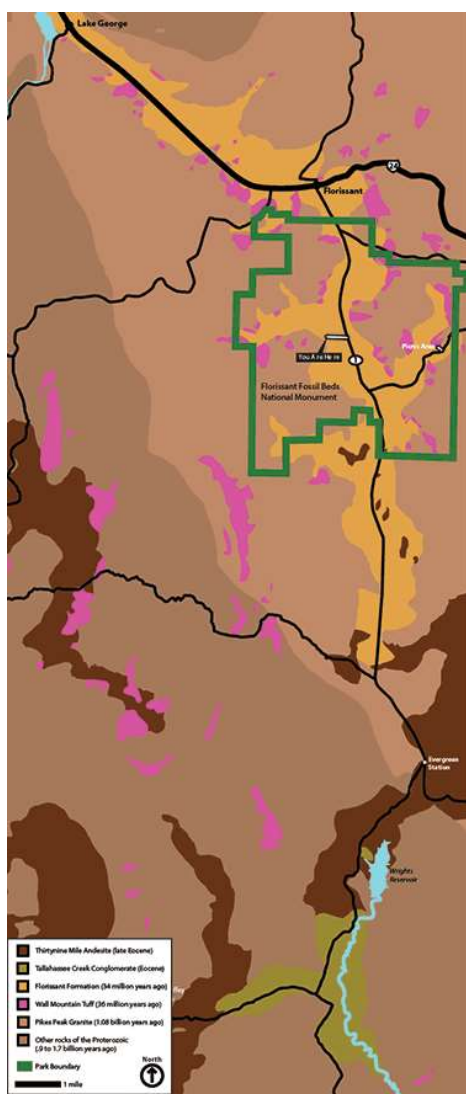
If you have any specimens at home to donate for grab bags, let me know and I can arrange to pick them up. I can also arrange for supplies if you need any. Contact John Kleber at [jkleber@att.net](mailto:jkleber@att.net) or 303-570-8164 to make arrangements.

The Bag Party Lady and the Bag Begger  
Lynette Warren and John Kleber



# Geology Corner

## Geologic History of Florissant



### Cripple Creek Granite and Pikes Peak Granite

Cripple Creek Granite is 1.46 billion years old and is the oldest rock in the Pikes Peak area, but most of the pink to reddish-orange outcrops in the Florissant area are the Pikes Peak Granite which is approximately 1.08 billion years old (Wobus, 2001).

### Echo Park Alluvium

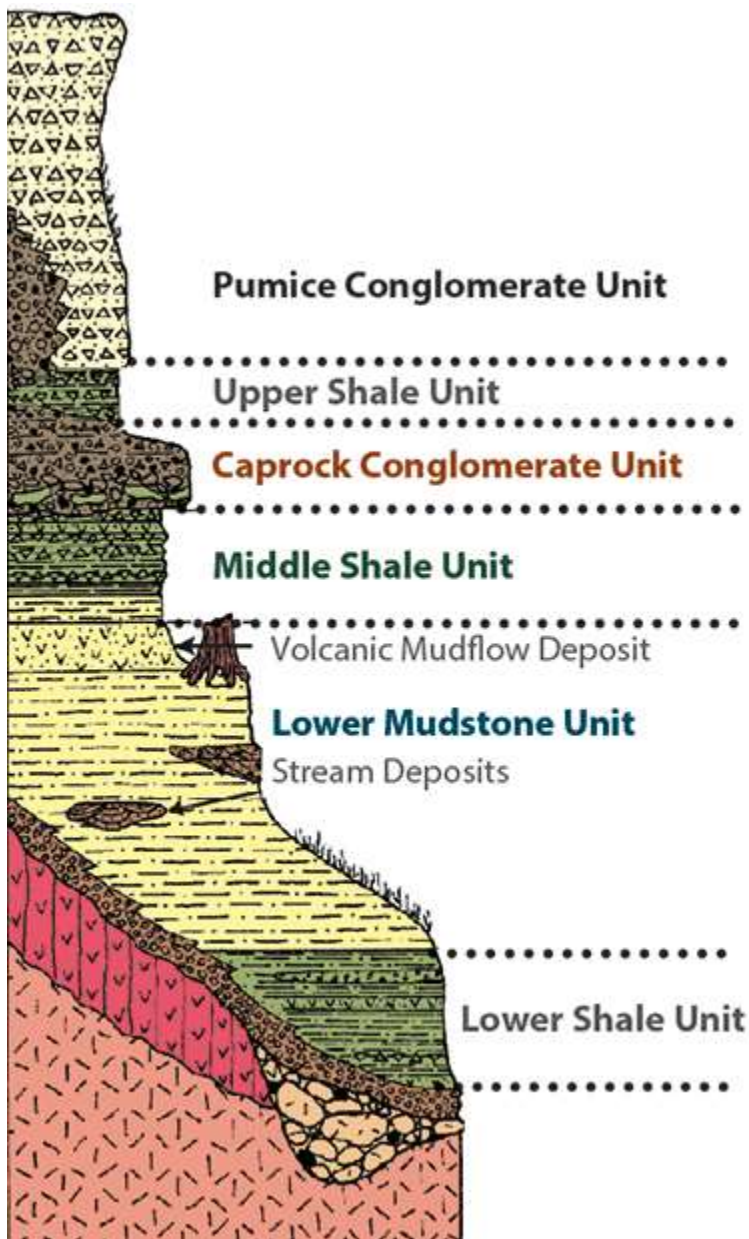
The Eocene Echo Park Alluvium (not pictured in this map) filled narrow valleys near Florissant and small outcrops can be found south of Lower Twin Rocks Road. The reddish-brown boulder alluvium is poorly sorted and contains pieces of the older Precambrian rock. In places, the Wall Mountain Tuff was deposited directly on the Echo Park Alluvium.

### Wall Mountain Tuff

Most of the sediments that were deposited in the Paleozoic were eroded away during the late Paleozoic uplift of the ancestral Rocky Mountains. By the late Eocene, erosion cut valleys that allowed new volcanic debris and sediments to be deposited. One of the volcanic deposits that filled these valleys was the Wall Mountain Tuff, which was part of an enormous pyroclastic flow that occurred approximately 37 million years ago. The superheated, gaseous flow originated from a caldera near Mount Princeton, 50 miles west of Florissant, and likely devastated the landscape of the Florissant area.

### Tallahassee Creek Conglomerate

More than 2 million years passed between the deposition of the Wall Mountain Tuff and the formation of the ancient Lake Florissant. During that time, much of the Wall Mountain Tuff was eroded away, leaving only scattered hints of its once immense lateral expanse. In place of the Wall Mountain Tuff, the Tallahassee Creek Conglomerate filled some of the newly formed valleys.



## The Guffey Volcanic Complex and Thirtynine Mile Andesite

The Guffey Volcanic Complex was part of the Thirtynine Mile Volcanic area, which was the source for much of the volcanic material to the Florissant valley. The volcanic area was dominated by a high stratovolcano that was centered around the modern community of Guffey. This volcano produced various kinds of eruptions, including ash and pumice, lahars (volcanic mudflows), and andesite lava flows. If you are interested in learning more about the Guffey Volcanic Complex check out the [Roadside Guide to the Volcanic Beginnings of Florissant Fossil Beds.](#)

### The Florissant Formation

Fast moving lahars from the Guffey Volcanic Center flowed into the Florissant valley approximately 34 to 35 million years ago. One of these debris' flows dammed a stream that flowed through the Florissant valley, forming the first lake where the lower shale unit was deposited. Gradually, the lake filled with shale and volcanic ash from ongoing eruptions, leaving only a series of small streams which deposited part of the lower mudstone unit. During the late Eocene giant redwoods grew along the banks of these streams, but another catastrophic lahar buried the base of the trunks, eventually killing and fossilizing the stumps. Following the burial of the trees, another lahar flowed down the valley south of Florissant and created a second dam and lake where the sediments of the middle shale were deposited. The middle shale unit is the primary shale unit visitors see when coming to Florissant Fossil Beds National Monument. However, most of the shale around the town of Florissant is the lower shale unit.

Following a relatively quiet period of gradual lake sediment deposition, a debris flow (caprock conglomerate) filled much of the lake. Water escape features in the conglomerate indicate that the caprock conglomerate was deposited in Lake Florissant. After the debris flow, gradual lake shale deposition continued. This eventually ended when the upper pumice conglomerate was deposited as a result of a large-scale eruption of pumice and ash from the Guffey Volcanic Complex, and this event ended the existence of Lake Florissant.

### Pleistocene Florissant

The story of the Florissant fossil beds does not end with the Eocene. Quaternary glaciers capped some of the higher mountains in the area, and most of the Pleistocene sediments in the Florissant valley are terrace gravels deposited by gravity and water. Buried within these sediments was a tooth and jaw fragment from a Columbian Mammoth (*Mammuthus columbi*), which was radiocarbon dated to at least 50,000 years old.

Reference: <https://www.nps.gov/flfo/learn/nature/geologic-history-of-florissant.htm>

# Florissant Field Trip Photo's!

Our September Field Trip to Florissant Colorado to hunt fossils was nice. We had a fun time splitting shale and finding a variety of leaves, seeds and other plants. Jim found a wonderfully preserved spider fossil which was the find of the day. It was a beautiful fall day to enjoy the colors of the aspens and even a herd of bighorn sheep.



# New Field Trip Added

## NEW FIELD TRIP -- Saturday, October 17, 2020 – Honey Bee/Queen Bee Club Claim

Trip Leader: Jim Hooten (303-548-7412 / [jahooten@msn.com](mailto:jahooten@msn.com))

**Sat., October 17, LGMC Honey Bee/Queen Bee Club Claim.** NO LIMIT to participation number. Amazonite, smoky quartz, fluorite, etc. Meet at 9:00 AM at Community Center in “downtown” Harris Park. Cars will then caravan from there to the collection site. Easy walk from the parking area. Directions: To get to Harris Park, take U.S. Hwy 285 southwest from Denver approximately 30 miles. Go thru Conifer, then Pine Jct., then about another 4 miles until you come to a stop light at the junction of State Road 43 (can only turn right—north). Turn north onto State Road 43 (may also be called 43A), and drive about 10 miles to Harris Park. The only potentially confusing point is where Road 43 turns to Road 47, maybe 6-7 miles up the highway. Just stay on the primary paved road (keep to right) and it will take you to Harris Park. The Community Center is the only “large” building around. Everything else is individual homes/cabins. We will continue to practice social distancing and wearing face masks while in close proximity to each other. Once the group has spread out over the collecting area, follow these guidelines at your discretion. Continue to **BE SMART**.

Dist = 60-70 mi. 4WD = Opt Kids = OK Tools = D

**Don't forget to go to Club website and sign up online, list the number of people attending, and print out the waiver and liability forms.**

# Calendar of Coming Earth Science Events!

**Nov. 19**, Colorado Scientific Society November Meeting. “The Rock that cried Silver Tears – The Early Jurassic Springdale Sandstone and its unusual precious metal mineralization at Silver Reef, UT, revisited”. Uwe KackCU Geological Science Colloquium (Online via Zoom - Wednesdays, 4 p.m.) see <http://www.colorado.edu/geologicalsciences/colloquium> CSU Dept. of Geoscience Seminars (online via Zoom - Fridays, 4 p.m.), see <https://warnercnr.colostate.edu/geosciences/geosciences-seminar-series/> Denver Museum of Nature and

**US National Committee for Geological Sciences Webinar Series.** Tuesdays 9:00 a.m. MT. For a complete list of webinar dates, topics, and speakers in the series, and to register, please visit <https://www.nationalacademies.org/our-work/americas-geoheritage-ii-a-workshop>.

**America's Geoheritage Workshop II Distinguished Speakers Webinar Program, Fall 2020**

Register via the hyperlinks below:

**Oct 6 Geoheritage and State Geological Surveys (AASG)**

**Oct 20 Geoheritage and Cultural Heritage**

**Nov 10 Geoheritage, Economic Development, Geotourism**

**Nov 17 Geoheritage and Geoscience Education (K-12, undergraduate, informal)**

**Dec 1 Geoheritage and Research Initiatives**

**Science, Earth Science Colloquium series**, VIP Room unless noted, meeting dates and day of the week vary. Museum admission is not required; see <http://www.dmns.org/science/research/earth-sciences/>

**Golden Beer Talks**, 2nd Tuesday, 6-8 p.m.), At Home Editions of Golden Beer Talks! These At Home Editions will include short videos providing an informational talk along with some details about local beers. “Golden’s grassroots version of TED talks, Expand your mind with a beer in your hand”. See <http://goldenbeertalks.org/> for more information.

**Rocky Mountain Map Society RMMS**; Denver Public Library, Gates Room, 3rd Tuesday, 5:30 p.m.), Online via Zoom until further notice. For further information see: <http://rmmaps.org/>

## LGMC Summary Minutes, Board Meeting

**Date: Sept 21, 2020**

**Location: Zoom Video Conference – Ron Wankner**

1. No reading of the last meeting minutes.
2. Vice President, Ian Duncanson:
  - a. No new member applications since last meeting in August.
3. Treasurer, Lesley Sebol :
  - a. Issued Treasurer's report.
  - b. Need to submit Charlie Wall's request for repayment of the claim submittals.
  - c. Motion to Accept: Ian; Second: Jim Hooten
4. Field Trips, Jim Hooten:
  - a. Only 2 people signed up for the Florrisant fossil trip to date.
  - b. Trip to the club claim was cancelled due to snow and only a few people signed up.
5. Programs, Brittany MacRostie:
  - a. May add Door Prizes for meetings. Use "Name Picker" app for drawing names. 4-5 prizes.
  - b. Could ask for photos of trips and activities (Cabbers & Faceters) to show during meetings.
  - c. Having difficulty getting presenters for meetings. Nicole suggested that we try to find videos.
6. Highlites, Tammy Jacobs:
  - a. No updates or issues. Tammy on vacation in Yellowstone.
7. Facebook, Nicole Bolger:
  - a. No updates
8. Website, Gus Hansen:
  - a. No updates.
  - b. Group discussed having online files and less paper. Need to determine best method to do this.
9. Faceters & Cabbers, John Kleber:
  - a. Having Zoom meetings and they seem to be going well.
10. Mineral Study Group: Nick North; Larry Havens
  - a. No meetings
11. Old Business
  - a. Lynette exploring online auction potential and sites. We would need a PayPal account for payment. We would need to have high value items to cover costs and fees. We would probably have a club only auction with experiences and minerals. Lynette will continue to look at options and present to the Board.
  - b. Send note to club that there is no verbal and silent auction this year at the church.
12. New Business
  - a. Need ideas for General Meetings.
  - b. Elections- Need candidates for offices. Need president and vice president roles for 2021.
13. Open Floor
  - a. Dues for 2021- Consider reduced fees (50%) for 2020 members since we didn't have much to offer in 2020. General agreement that 50% reduction was affordable and reasonable since we didn't have expenses in 2020 and bank accounts are stable. Have a vote in October.
14. Next meeting:
  - a. October 19 via Zoom Mtg.
15. Meeting Adjourned at 8:05 pm.

# Club Announcements

## **Moving?** Change of Address, Email or Phone Number?

Ready to go paperless?

Please notify **Ian Duncanson** of any changes at [idunc@q.com](mailto:idunc@q.com) or 303-798-9174.

**Club Vests** Show your club support **Ian Duncanson** has club vests available for sale. Price includes vest, sewed on club patch (on back) and a club pin

\$18 for small and medium sizes

\$19 for large and X-large sizes

\$20 for XX-large and XXX-large

*Do you know someone who could use some sunshine?* Nobody knows everybody. If you know of a club member or family who is having a health problem or other problem, and who could be encouraged by receiving a thinking-of-you card, please let us know so that we may encourage them. Send a note to our sunshine coordinator and let her know, **Lynette Warren**, [flywithle123@comcast.net](mailto:flywithle123@comcast.net).



*Like us on FaceBook*

LIKE and FOLLOW us @LittletonGemAndMineralClub

## LGMC Website

**Our website has been updated!**

Please check out the new "Member" section of the website! We'll archive Newsletters, share photos, and get details of upcoming field trips.

To view the "Member" section, you must register as a member of the website:

<https://littletongemandmineralclub.com/register/>

As only LGMC members will have access to this material, we'll be checking your name against the current club roster, so if you haven't yet, reach out to Ian Duncanson to pay your 2020 dues!

Thanks,  
Gus

### **What are you working on?**

Send us what you are doing and we will include it in next month's newsletter.

[Jacobstammy80@gmail.com](mailto:Jacobstammy80@gmail.com)

Thanks to everyone who contributed to the newsletter! ~Tammy

**2020 Board of Trustees**

President	<i>Ron Wankner</i>	303-618-5549
Vice President and Membership Chairman	<i>Ian Duncanson</i>	303-798-9174
Secretary	<i>Larry Havens</i>	303-757-6577
Treasurer	<i>Lesley Sebol</i>	720-999-1372
President elect	<i>Ron Wankner</i>	303-618-5549
Program Chairman	<i>Brittany MacRostie</i>	630-699-2415
Field Trip Chairman	<i>Jim Hooten</i>	303-770-7177
Highlites Newsletter Editor	<i>Tammy Jacobs</i>	303-680-8830
Trustee (Year of 2019 as past President)	<i>Travis Leach</i>	303-887-9787
Trustee (2-year term 2019 & 2020)	<i>Lynette Warren</i>	303-956-4634
Trustee (2-year term 2018 & 2020)	<i>Charlie Wall</i>	303-933-0368

**Chairpersons & Appointed Officers**

Sunshine Chairperson	<i>Lynette Warren</i>	303-956-4634
Refreshments	<i>Anne Jenkins</i>	303-730-7696
Librarian	<i>Mary Davis</i>	303-680-5112
Historian	<i>Open</i>	
Facebook Editor	<i>Nicole Bolger</i>	720 344-5280
Hospitality	<i>Nick North</i>	303-840-1177
Grab Bags	<i>John Kleber</i>	720-851-8510
Web Administrator	<i>Gus Hansen</i>	480-489-3978
Show Committee Representative	<i>Lynette Warren</i>	303-956-4634
RMFMS & AFMS Representative	<i>Larry Havens</i>	303-757-6577
Denver Council Representative	<i>Nick North</i>	303-840-1177
Cabbers & Faceters Group	<i>John Revis</i>	720-569-6685
“ “	<i>John Kleber</i>	720-851-8510
Mineral Study Group	<i>Bob Zartman &amp; Nick North</i>	303-973-0405

**Meetings:** The Littleton Gem & Mineral Club meets the third Friday of each month, September through May, at the St Philip Lutheran Church, 7531 S. Kendall Blvd, Littleton, CO 80128. Doors open at 7:00 p.m. and the meetings begin at 7:30 p.m. All meetings are open to the public. Club and section meetings may deviate from their regular schedules due to holidays, shows, inclement weather, etc.

The Littleton Gem and Mineral Club is affiliated with the American Federation of Mineralogical Societies, The Rocky Mountain Federation of Mineralogical Societies, The Colorado Federation of Gem and Mineral Societies, and the Greater Denver Area Gem and Mineral Council.

Any material contained in the HIGHLITES may be reproduced, as long as credit is given, unless otherwise indicated. Contribution articles are welcome.

**\*\*The deadline for submissions is the 1<sup>st</sup> Friday of each month.** Please send your material by email to [jacobstammy80@gmail.com](mailto:jacobstammy80@gmail.com).

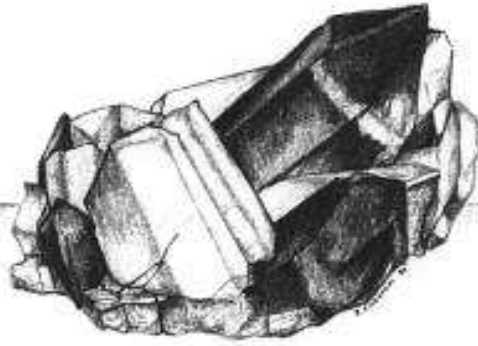
**Advertising Rates:** \$50 / Full Page. \$30 / Half Page. \$20 / Quarter Page.





# *HighLites*

LITTLETON GEM & MINERAL CLUB



HARRIS PARK AMAZONITE & SMOKY QUARTZ

LITTLETON GEM & MINERAL CLUB  
P.O. Box 283  
Littleton, Colorado 80160

FIRST CLASS MAIL

